



MOBILE LOADING BRIDGE

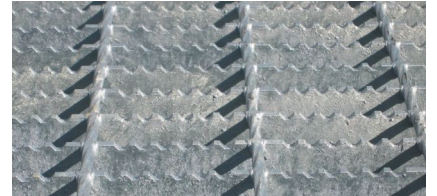


Mobile Basic Bridge, with curved driving profile

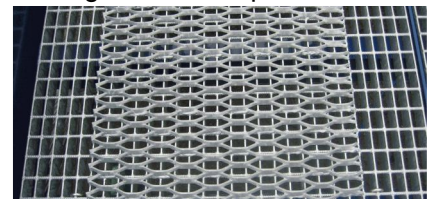
- Capacity:** 7 000 - 10 000 kg, *static load*
- Lenght:** 12 000 mm
- Driving width:** 2 000 mm
- Driving surface:** *hotgalvanised anti-slip grating*
- alternatively:** *hotgalvanised driving level + 2 x 600 mm width expament net welded on*
- Heightrange:** 750 - 1 550 mm, *double-acting hydraulic handpump*
- Surface finish:** *sand blasted, bottom and surface painted with alkyd paint, colour Dark Blue*

Locking changes, safety letgs, full rubber wheels and towing pocket

Hotgalvanised anti-slip grating



Drivinglevel with expament mesh



Cut Your loading and handling costs to minimum with Mobile Loading Bridges

LOADK QUICKLY - LOAD SAFELY - LOAD EASILY

LINDQVIST OY LINTEC
TOIKANSUONTIE 17
53500 LAPPEENRANTA
FINLAND
TEL.: +358 5 416 1701
WWW.LINTEC.FI
LINTEC@LINTEC.FI